

AGATE LAKE RESOURCES LLC
120 Greenwood Lane · Duluth MN 55803

12 September 2009

Minnesota Department of Natural Resources
Division of Lands and Minerals
1525 Third Avenue East
Hibbing, MN 55746
Attn: Matt Oberhelman

Re: 2009 Exploration Plan

Matt:

At this time, Agate Lake Resources LLC wishes to submit their plan for exploration activities on leases MM-10223 to MM-10228, inclusive, for calendar year 2009 (see attached maps).

2009 exploration activity will be limited to those covered by geologic data gathering activities under the scope of Minnesota Rules part 6125.0620, including sampling of glacial overburden and sampling of bedrock. Specifically, we plan to engage in:

1. Bedrock mapping.
2. Bedrock sampling. Bedrock sample collection may include chip or channel sampling limited to immediate bedrock surface. No drilling of any kind is planned. Access to sampling sites will be by automobile or ATV utilizing existing roads and trails, or be on foot.
3. Glacial overburden sampling. Samples will be collected from hand-dug pits. After sample collection, the pits will be backfilled. Access to sampling sites will be by automobile or ATV utilizing existing roads and trails, or be on foot.

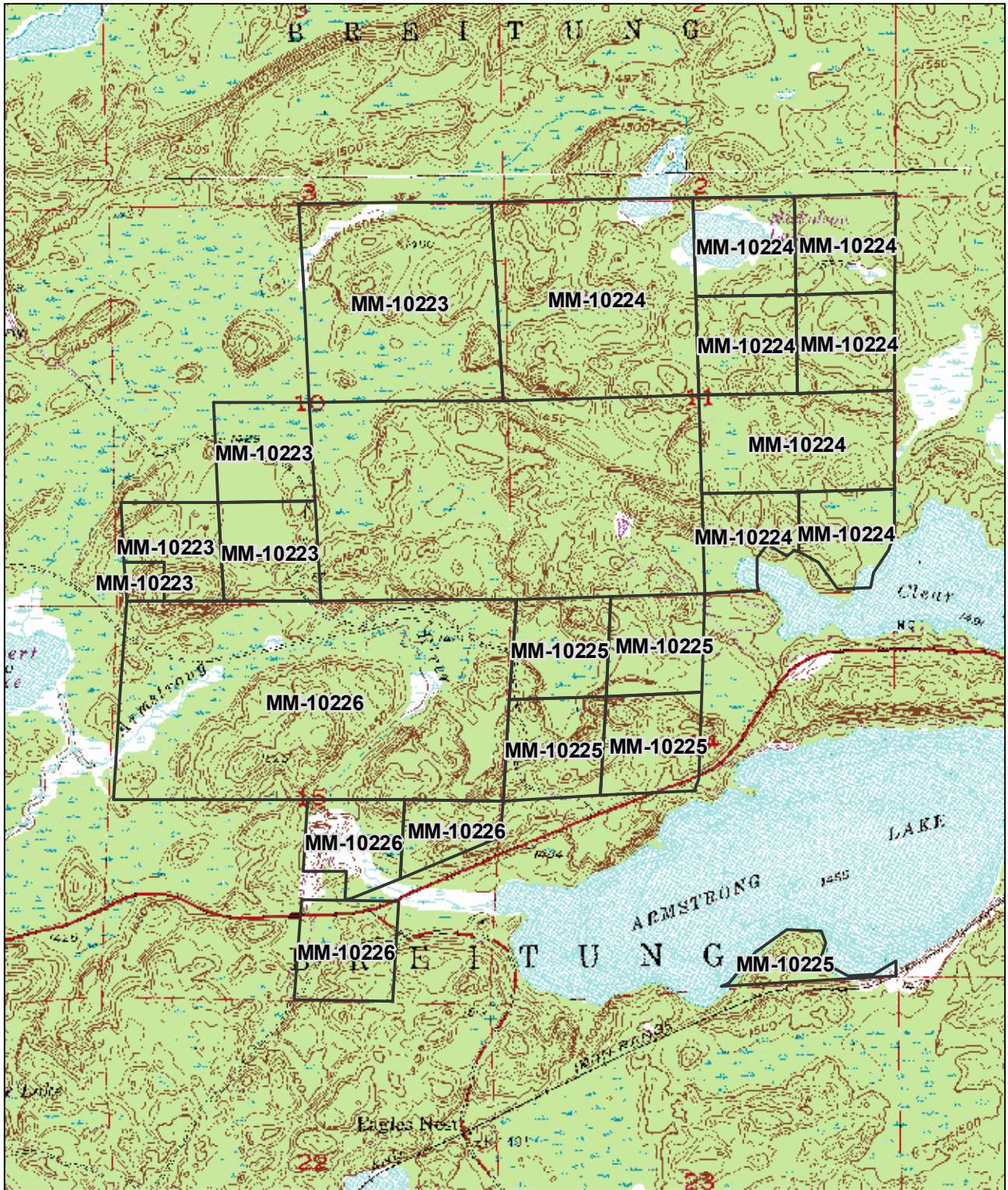
Exploration activities will commence upon completion of review of the exploration plan, and will proceed through the end of the year (approximately October 4th to December 31st 2009).

In the event that the scope of our planned activities changes, an updated exploration plan will be submitted for review.

Please do not hesitate to contact us regarding any questions you may have regarding our planned activities. Thank you for your consideration.

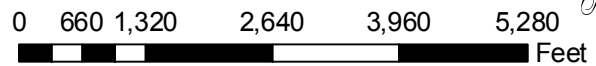
Best Regards,

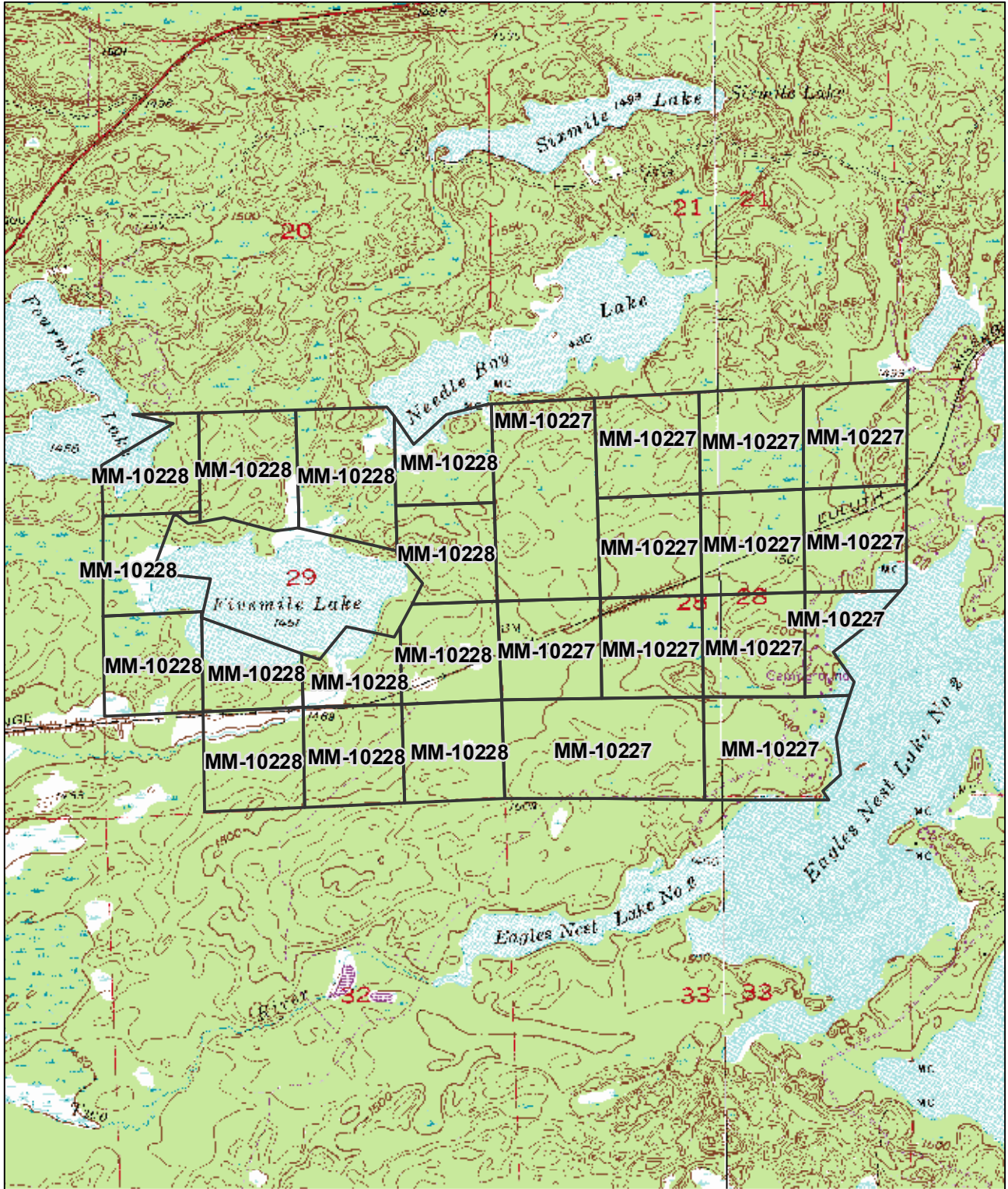
Phillip Larson, Ph.D., P.G.
Managing Partner



AGATE LAKE RESOURCES LLC

North Mineral Leases





AGATE LAKE RESOURCES LLC

South Mineral Leases

